

# Math 20300

## Calculus III

### Lesson 9

## Vector-Valued Functions

Dr. A. Marchese, The City College of New York

Bookmarks have been added to this video  
at the following times:

- |  |       |     |
|--|-------|-----|
| 1. Definition of vector-valued function        | 00:07 | p.2 |
| 2. Sketching the curve of a vector<br>function | 02:04 | p.3 |
| 3. Limits and the derivative                   | 15:20 | p.7 |

# Vector Valued Functions

A vector valued function (or vector function)

of  $\mathbb{R}$  assigns a vector to each number in  $\mathbb{R}$ .

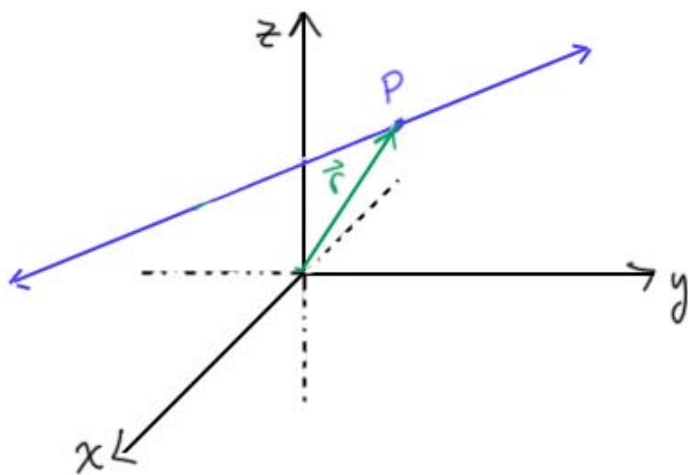
$$\vec{r}(t) = \langle f(t), g(t), h(t) \rangle = f(t)\vec{i} + g(t)\vec{j} + h(t)\vec{k}.$$

Ex. We've already seen the idea of a position

vector:

point  $P(x, y, z)$

vector  $\vec{r} = \langle x, y, z \rangle$



and we know

$$x = x_0 + at$$

$$y = y_0 + bt$$

$$z = z_0 + ct$$

So we can think of  $\vec{r}$  as a  
vector valued function

$$\vec{r}(t) = \langle x(t), y(t), z(t) \rangle.$$

For any point on the line,  $\vec{r}(t)$  is the

vector from the origin to that point.

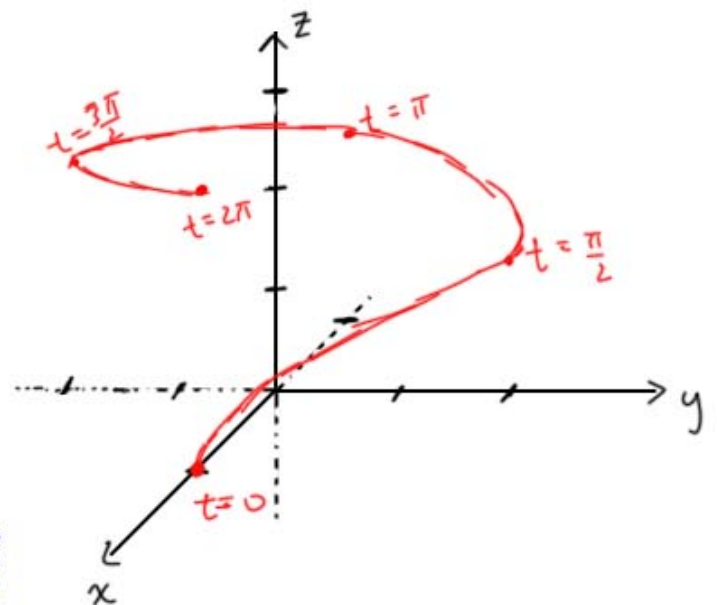
For any  $t \in \mathbb{R}$ ,  $\vec{r}(t)$  gives the vector from the origin to the point on the line } vector valued function

Ex. Sketch the curve defined by the vector function  $\vec{r}(t) = \langle \cos t, 2 \sin t, \sqrt{t} \rangle$

$$x(t) = \cos t \in [-1, 1]$$

$$y(t) = 2 \sin t \in [-2, 2]$$

$$z(t) = \sqrt{t} \in [0, \infty)$$



$$t=0 \quad \begin{aligned} x &= 1 \\ y &= 0 \\ z &= 0 \end{aligned}$$

$$t = \frac{\pi}{2} \quad \begin{aligned} x &= 0 \\ y &= 2 \\ z &= \sqrt{\frac{\pi}{2}} \approx 1.25 \end{aligned}$$

$$t = \pi \quad \begin{aligned} x &= -1 \\ y &= 0 \\ z &= \sqrt{\pi} \approx 1.77 \end{aligned}$$

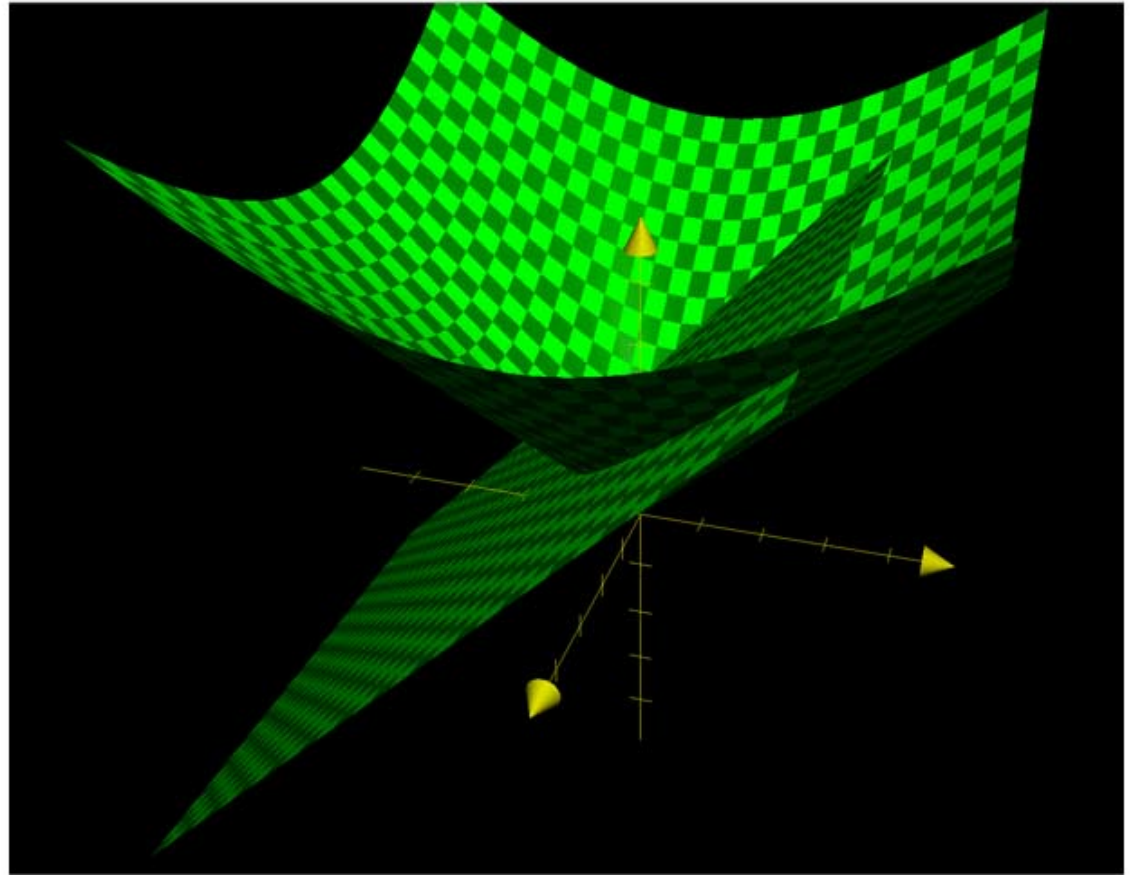
$$t = \frac{3\pi}{2} \quad \begin{aligned} x &= 0 \\ y &= -2 \\ z &= \sqrt{\frac{3\pi}{2}} \approx 2.17 \end{aligned}$$

$$t = 2\pi \quad \begin{aligned} x &= 1 \\ y &= 0 \\ z &= \sqrt{2\pi} \approx 2.51 \end{aligned}$$



Ex. Find a vector function that represents the curve of intersection of the cone  $z = \sqrt{x^2 + y^2}$  and the plane  $y - z = -2$

←  
from  
 $z^2 = x^2 + y^2$   
top half only.



We can see that the curve is parabola

We're looking to parametrize the curve

$$x = x(t)$$

$$y = y(t)$$

$$z = z(t)$$

then write  $\vec{r}(t) = \langle x(t), y(t), z(t) \rangle$

Eliminate  $z$  :  $\sqrt{x^2 + y^2} = y + 2$

$$x^2 + y^2 = (y + 2)^2 = y^2 + 4y + 4$$

$$x^2 = 4y + 4$$

$$x^2 - 4 = 4y$$

$$y = \frac{x^2}{4} - 1$$

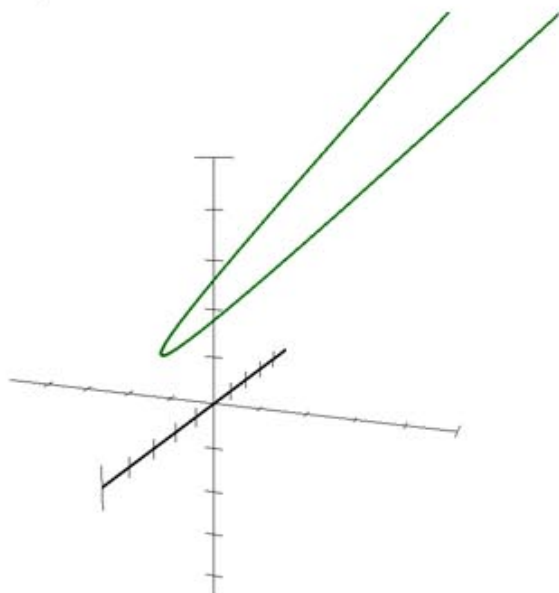
let  $x = t$

$$y = \frac{t^2}{4} - 1$$

$$z = y + 2 = \frac{t^2}{4} - 1 + 2 = \frac{t^2}{4} + 1$$

$$z = \frac{t^2}{4} + 1$$

so  $\vec{r}(t) = \left\langle t, \frac{t^2}{4} - 1, \frac{t^2}{4} + 1 \right\rangle$



# Limits and The Derivative

If  $\vec{r}(t) = \langle f(t), g(t), h(t) \rangle$ , then

$$\lim_{t \rightarrow a} \vec{r}(t) = \langle \lim_{t \rightarrow a} f(t), \lim_{t \rightarrow a} g(t), \lim_{t \rightarrow a} h(t) \rangle$$

So that we can define

$$\begin{aligned} \vec{r}'(t) &= \lim_{h \rightarrow 0} \frac{\vec{r}(t+h) - \vec{r}(t)}{h} \\ &= \langle f'(t), g'(t), h'(t) \rangle \\ &= \left\langle \frac{df}{dt}, \frac{dg}{dt}, \frac{dh}{dt} \right\rangle \end{aligned}$$

Then for a vector function describing a curve in  $\mathbb{R}^3$ ,

$$\vec{r}(t) = \langle x(t), y(t), z(t) \rangle$$

$$\vec{r}'(t) = \left\langle \frac{dx}{dt}, \frac{dy}{dt}, \frac{dz}{dt} \right\rangle$$

↑  
rate of change of  $x$  with respect to  $t$

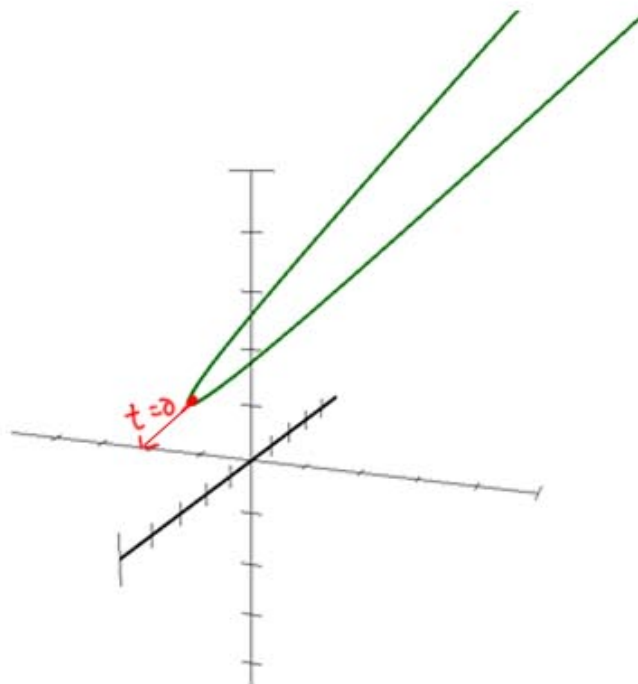
and  $\vec{r}'(t) = \left\langle \frac{dx}{dt} \Big|_{t_0}, \frac{dy}{dt} \Big|_{t_0}, \frac{dz}{dt} \Big|_{t_0} \right\rangle$

is a tangent vector to the curve  
at  $t = t_0$ .

For the parabola in  $\mathbb{R}^3$  above

$$\vec{r}(t) = \left\langle t, \frac{t^2}{4} - 1, \frac{t^2}{4} + 1 \right\rangle \quad \vec{r}(0) = \langle 0, -1, 1 \rangle$$

$$\vec{r}'(t) = \left\langle 1, \frac{t}{2}, \frac{t}{2} \right\rangle \quad \vec{r}'(0) = \langle 1, 0, 0 \rangle$$





Now, find parametric equations for The  
tangent line to the curve of  $\vec{r}(t)$  at  $t=0$ .

point  $(0, -1, 1)$  direction  $\langle 1, 0, 0 \rangle$

$$x = 0 + t$$

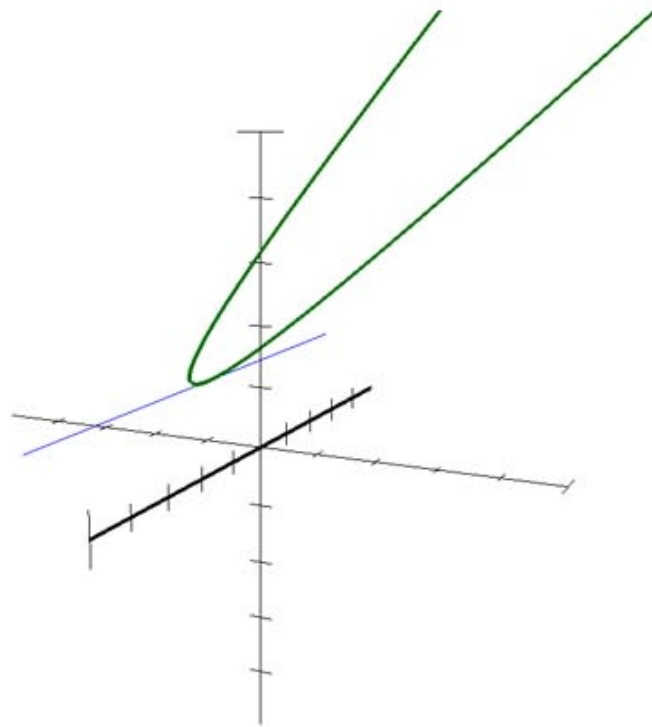
$$x = t$$

$$y = -1 + 0t$$

$$\Rightarrow y = -1$$

$$z = 1 + 0t$$

$$z = 1$$



Ex. For the curve of vector function  
 $\vec{r}(t) = \langle \cos t, 2\sin t, \sqrt{t} \rangle$ , find a  
unit tangent vector at  $t = \frac{\pi}{2}$

$$\vec{r}'(t) = \langle -\sin t, 2\cos t, \frac{1}{2\sqrt{t}} \rangle$$

$$\vec{r}'\left(\frac{\pi}{2}\right) = \left\langle -\sin\frac{\pi}{2}, 2\cos\frac{\pi}{2}, \frac{1}{2\sqrt{\frac{\pi}{2}}} \right\rangle$$

$$= \left\langle -1, 0, \frac{1}{\sqrt{2\pi}} \right\rangle$$

tangent vector

$$\|\vec{r}'\left(\frac{\pi}{2}\right)\| = \sqrt{1 + \frac{1}{2\pi}}$$

$$\frac{1}{2\sqrt{\frac{\pi}{2}}} \frac{\sqrt{\frac{\pi}{2}}}{\sqrt{\frac{\pi}{2}}}$$

$$= \frac{\sqrt{\frac{\pi}{2}}}{\pi}$$

$$= \frac{1}{\pi} \cdot \frac{\sqrt{\pi}}{\sqrt{2}}$$

$$\vec{u} = \frac{1}{\sqrt{1 + \frac{1}{2\pi}}} \left\langle -1, 0, \frac{1}{\sqrt{2\pi}} \right\rangle$$

$$= \frac{1}{\sqrt{2\pi}}$$

$$= \left\langle \frac{-1}{\sqrt{1 + \frac{1}{2\pi}}}, 0, \frac{1}{\sqrt{2\pi+1}} \right\rangle$$

---

